

# Low-Carbon Development Planning Toolkit Training Program

GEI Energy and Climate Change; [YU Qingchan](#), [XU Shengnian](#), [CUI Nanying](#)

Tianjin, Shanxi, Guangdong; China

## 低碳政策量化分析研讨会



An official policy toolkit training is underway in Shanxi – 2015 GEI

**THE PROBLEM:** When tasked with lowering carbon emissions, moving forward is not as easy as shutting down factories. In fact, officials also must increase economic growth and employment. As such, the goals of low-carbon seem contradictory and implementation of an effective low-carbon policy is unrealistic.

**THE REALITY:** Over the medium to long term, a science-based low carbon policy can sustain increased economic growth, employment and productivity.

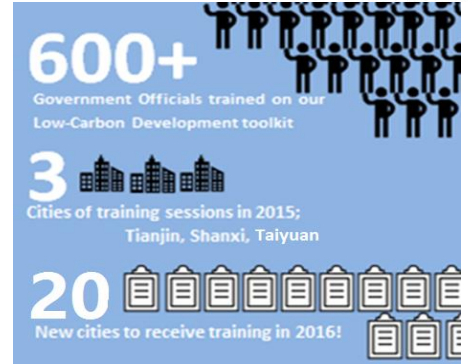
**OUR SOLUTION:** GEI's **Low Carbon Development Planning Toolkit** helps officials and policy advisors craft a science-based and implementable low-carbon development policy

**OUR OUTPUT:** GEI with CAS-IPM developed the GHG Inventory and Forecast Software and Registration Certificate for the transportation

sector and residential commercial institution (RCI) sector. These new software will help improve the GHG inventory spreadsheet.

In 2015, we trained **600+ government officials** and technical experts on our Low-Carbon Development Planning Toolkit in 2015 through 3 trainings run by GEI and Center for Climate Strategies (CCS) in **Tianjin, Guangzhou and Shanxi**. These trainings involved **100 other experts** from institutions including Tianjin University, Guangdong Provincial Academy of Social Sciences (GASS), Low Carbon Economy Research center of Sun Yat-Sen University, Shanxi Research Center for Eco-environmental Sciences (RCESS), and Gansu Carbon Emission Trading Center.

We also disseminated the toolkit to **Tianjin Academy of Governance (TAG)** and trained TAG teachers; now



officials enrolled in TAG low-carbon curriculum will learn how to craft and implement better policies.

Finally, working with CCS, Regional Economic Modeling Inc. (REMI), and Institute of Policy and Management of the Chinese Academy of Sciences (CAS-IPM), we secured Memorandum of Understandings (MOU) to develop and **disseminate a Chinese Prototype Policy Insight (PI)+ model to 20+ new provinces/cities in the next year** – an increase of about 4 times as many locations from 2015.

### HOW DOES THE GEI LOW-CARBON DEVELOPMENT PLANNING TOOLKIT WORK?



These steps analyze the economic and environmental data of a specific region (province or city) and policy makers can compare how particular policies will impact economic variables and carbon emissions. Our toolkit was first developed by CCS in American and specifically adapted to China. The Chinese toolkit first debuted in 2012 in Chongqing and received high accolades from the China's National Development and Reform Commission (NDRC) and Chongqing DRC. It is consistently updated for optimal performance and reliability.