

Emphasizing the local characteristics of the Grassland Protection Agreement

GEI Biodiversity Conservation; [PENG Kui](#); [KONG Linghong](#)

Qinghai and Ningxia Provinces, China



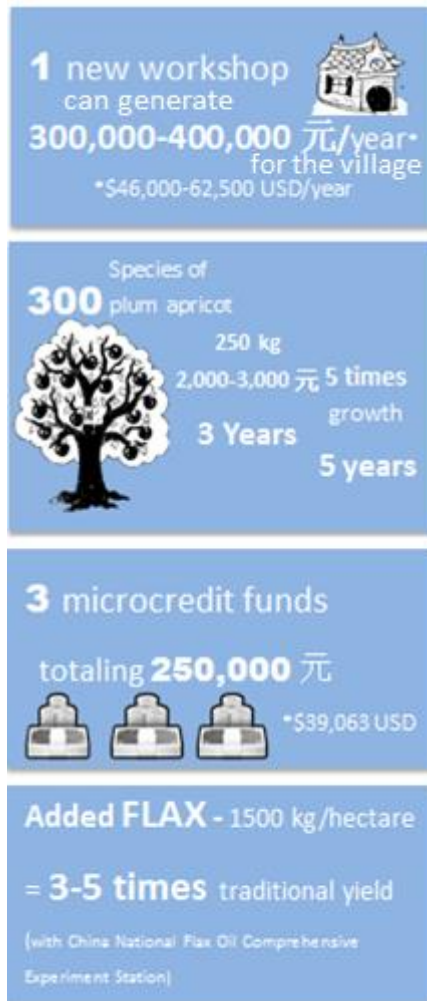
A farmer in Ningxia attends to his new apricot plum trees that will bring fruit and funds – 2015 GEI

In addition to extensive research and policy work in Western China, GEI's Biodiversity Conservation team worked directly with herders, **training them to manage and advocate for their own environment.** We also opened **community development funds** utilizing local government aid; these funds secure the projects' longevity. Through this **market mechanism philosophy**, we help communities develop and achieve sustainable growth.

GEI began the grassland protection project in 2011 in Qinghai and Ningxia; **by the end of 2015, the project had reached nearly 133 households across 30,000 hectares** with 48 demonstration households in Qinghai's Ganda village, 53 households in Qinghai's Longe village, and 32 households in Ningxia.

In these villages, we followed the **"Ecological management and protection agreement"** to support for livestock cooperatives and ecotourism activities in Ganda, and protection and development work in Ningxia.

4 PROJECTS from 2015 and their impact on local revenue:



TRAININGS: To share our findings and involve more stakeholders, **GEI held a series of training workshops throughout 2015 in Qinghai and Ningxia.** We welcomed over 30 herding community representatives to attend and learn about agriculture techniques. Throughout the meetings, GEI *shared knowledge and engaged in discussion* with various stakeholders about how to most effectively help the herders thrive in and protect China's treasured Western region.

- January 2015, in Ningxia's Yunwushan protected areas we hosted "The Ningxia & Tibetan Plateau Grassland Protection Protocol Exchange" and an agricultural technical training.

- July 2015 in Qinghai's Ganda village we hosted "Eco-System Services Based Ecological Training."

- Herders, government officials and experts all joined us for the **"Sanjiangyuan Ecological Pasture Management Seminar"** at which GEI explained the research and demonstration results from Inner Mongolia, Sichuan, Qinghai, etc.